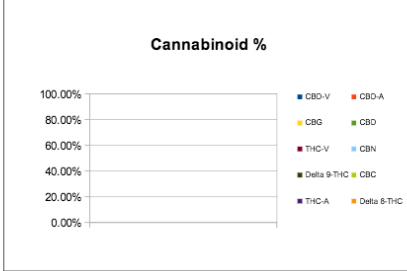


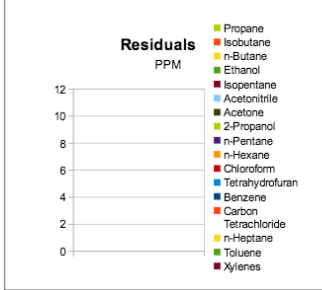
Sample Information		
Sample Identification	Blend 2	
Laboratory Number	2018009	
Batch Number	N/A	
Matrix	Concentrate	
Analyzed Date	07/10/18	
Extraction Date	07/10/18	
Cannabinoid (HPLC)	%	mg/g
CBD-V	0.52%	5.18
CBD-A	0.00%	0.00
CBG	0.00%	0.00
CBD	85.76%	857.64
THC-V	0.00%	0.00
CBN	0.00%	0.00
Delta 9-THC	0.00%	0.00
CBC	0.00%	0.00
THC-A	0.00%	0.00
Delta 8-THC	0.00%	0.00
Cannabinoids Total		
Max Active THC	0.00%	0.00
Max Active CBD	85.76%	857.64
T. Active Cannabinoids	86.28%	862.82
Total Cannabinoids	86.28%	862.82

Max Active Ratios		
NA:1 CBD to THC		
0.0:1 THC to CBD		

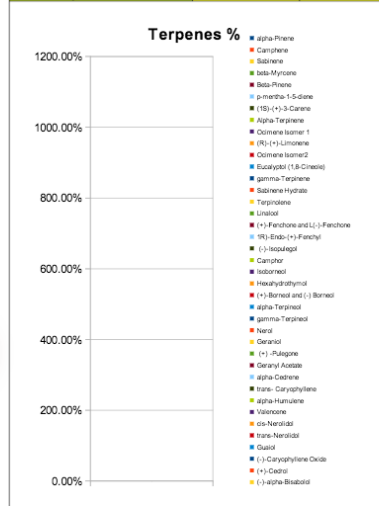


ASSOCIATION OF COMMERCIAL CANNABIS LABORATORIES

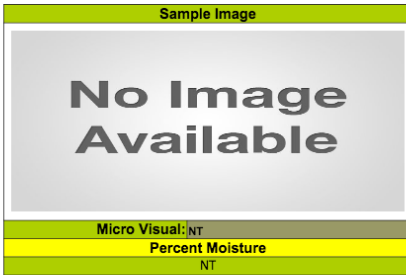
RS (GCMS-MS)	PPM	RL
Compound		
Propane	NT	5.0
Isobutane	NT	5.0
n-Butane	NT	5.0
Ethanol	NT	5.0
Isopentane	NT	5.0
Acetonitrile	NT	5.0
Acetone	NT	50.0
2-Propanol	NT	5.0
n-Pentane	NT	5.0
n-Hexane	NT	5.0
Chloroform	NT	5.0
Tetrahydrofuran	NT	5.0
Benzene	NT	5.0
Carbon Tetrachloride	NT	5.0
n-Heptane	NT	5.0
Toluene	NT	5.0
Xylenes	NT	10.0



Terpene (GC-MS)	%	mg/g
Compound		
alpha-Pinene	NT	NT
Camphene	NT	NT
Sabinene	NT	NT
beta-Myrcene	NT	NT
Beta-Pinene	NT	NT
p-mentha-1,5-diene	NT	NT
(1S)-(+)-3-Carene	NT	NT
Alpha-Terpinene	NT	NT
Ocimene Isomer 1	NT	NT
(R)-(+)-Limonene	NT	NT
Ocimene Isomer2	NT	NT
Eucalyptol (1,8-Cineole)	NT	NT
gamma-Terpinene	NT	NT
Sabinene Hydrate	NT	NT
Terpinolene	NT	NT
Linalool	NT	NT
(+)-Fenchone and L(-)-Fenchone	NT	NT
1R)-Endo-(+)-Fenchyl	NT	NT
(-)-Isopulegol	NT	NT
Camphor	NT	NT
Isoborneol	NT	NT
Hexahydrothymol	NT	NT
(+)-Borneol and (-) Borneol	NT	NT
alpha-Terpineol	NT	NT
gamma-Terpineol	NT	NT
Nerol	NT	NT
Geraniol	NT	NT
(+)-Pulegone	NT	NT
Geranyl Acetate	NT	NT
alpha-Cedrene	NT	NT
trans-Caryophyllene	NT	NT
alpha-Humulene	NT	NT
Valencene	NT	NT
cis-Nerolidol	NT	NT
trans-Nerolidol	NT	NT
Guaiol	NT	NT
(-)-Caryophyllene Oxide	NT	NT
(+)-Cedrol	NT	NT
(-)-alpha-Bisabolol	NT	NT
Total Terpenes	NT	NT



Sample Image



Micro Visual: NT
 Percent Moisture: NT

g/medible	NA
mg THC/medible	NA
mg CBD/medible	NA
(mg) total cannabinoids/medible	NA

Metals	PPM	RL
Compound		
Lead	NT	0.010
Arsenic	NT	0.010
Cadmium	NT	0.010
Mercury	NT	0.001



RL=Reporting Limit
 NA=Not Applicable
 NT=Not Tested